

# Woodland Rotary Endowment

Community

A Pillar of Service

# Understanding of Organization

## Rotary Club of Woodland

IRC 501(c)(4) - Civic leagues and social welfare organizations

Dues, Recognitions, and Contributions = NON-DEDUCTIBLE

Governed by Board of Directors – Elected by Membership

Local chapter of International Organization  
Operate within Parental Guidelines

## Woodland Rotary Endowment

IRC 501(c)(3) - Charitable Organization

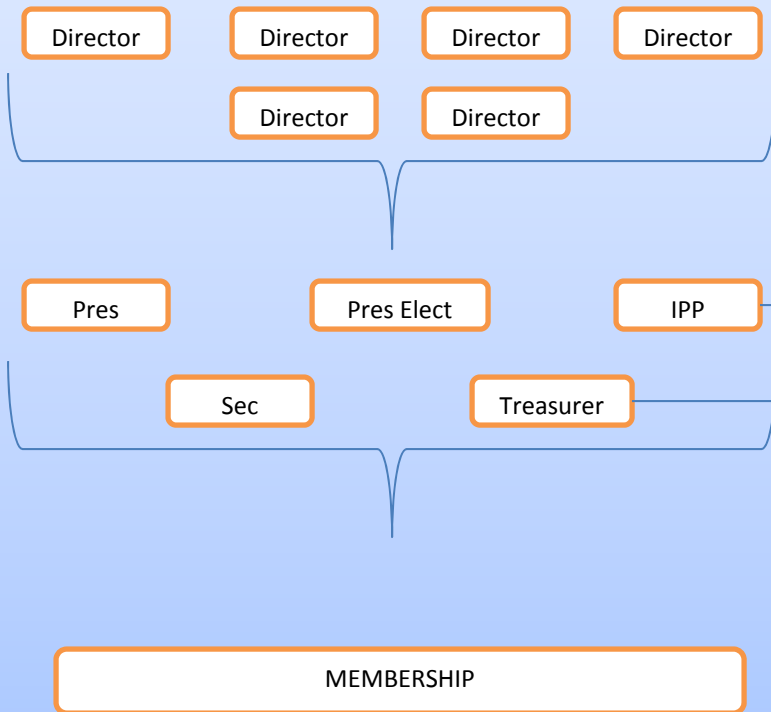
Contributions = ARE TAX DEDUCTIBLE

Governed by Board of Directors – Partially Elected by Membership of the Rotary Club of Woodland

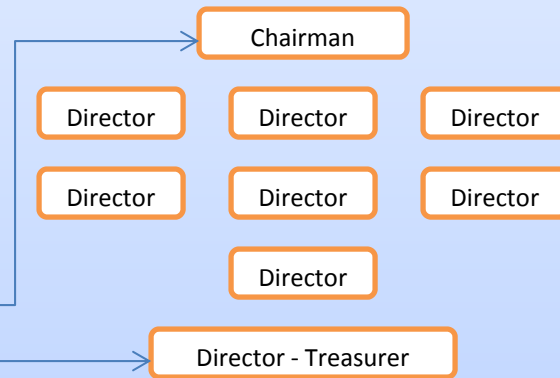
Independently formed and legally separate organization

Two fold Charter  
Scholarships  
Charitable

## ROTARY CLUB OF WOODLAND



## WOODLAND ROTARY ENDOWMENT



# Current Governing Boards and Officers

## ROTARY CLUB OF WOODLAND

<b>President</b>	Kris Kristensen
<b>President-elect</b>	Gary Wegener
<b>Immediate Past President</b>	Clyde Brooker
<b>Secretary</b>	Alan Flory
<b>Treasurer</b>	Tony Delevati
<b>Director</b> (term ending 6/30/17)	Christy Hayes
<b>Director</b> (term ending 6/30/17)	Shawn Seyk
<b>Director</b> (term ending 6/30/17)	George Burger
<b>Director</b> (term ending 6/30/16)	Jenna Green
<b>Director</b> (term ending 6/30/16)	Dick Hoppin
<b>Director</b> (term ending 6/30/16)	Tom LaBrie

## WOODLAND ROTARY ENDOWMENT

<b>Chair</b> (Immediate Past Club President)	Clyde Brooker
<b>Director</b> (Club Treasurer)	Tony Delevati
<b>Director</b> (term ending 6/30/17)	Alan Flory
<b>Director</b> (term ending 6/30/17)	Steve Venables
<b>Director</b> (term ending 6/30/17)	Roger Kohlmeier
<b>Director</b> (term ending 6/30/17) (also serves as Secretary)	Bob Nakken
<b>Director</b> (term ending 6/30/16)	Karl Diekman
<b>Director</b> (term ending 6/30/16)	Roger Dorris
<b>Director</b> (term ending 6/30/16)	Clancy Duppong

# Procedural Operations

## Woodland Rotary Endowment

- ❖ Revenue
  1. Donations
  2. Auction
  3. Bequest
  
- ❖ Fund Balances
  1. Permanent Scholarship Fund
  2. Permanent Dorris Ag Scholarship Fund
  3. Temporary Designated Funds
  4. Community Fund
  
- ❖ Distributions
  1. Scholarship – Two Schools / 4 Years = 8 active
  2. Dorris Ag Scholarship = Single annual scholarship identified and recommended by the Dorris Family
  3. Designated Funds held and operated for approved charitable purposes, i.e. Project Play, Luna Vista
  4. Community Fund approval of recommendations presented by the Rotary Club of Woodland.

# Specific Funds Scholarships

## Operations

- Formed to Endow Scholarship.
- Scholarships for graduating seniors from the Woodland Joint Unified School District.
- Criteria = Academic Excellence = Valedictorian
- Award = \$6,000 disbursed (generally) over a four year period in increments based upon academic program followed i.e. Semester or Quarter system.
- Required reporting of student regarding achievement and current enrollment.

## Current Position and Target

- The Target was to build the scholarship endowment to a point at which it's own earning will sustain the scholarship disbursements and maintain inflationary growth.
- Scholarship Distributions = \$12,000, given a 2.5% distribution rate the fund will require \$480,000 to reach the target.
- Current balance is approximately \$480,300 in the scholarship endowment's investment account.

# Scholarship

## Additional Notes

- Dorris Ag Scholarship
  1. Separate Investment Account
  2. Operated under it's own directives
  3. Ongoing funding by the Dorris family with intent for self sustainment.
  
- Don L Fisher Estate
  1. Designated a scholarship
  2. Designated Woodland Rotary Endowment
  3. Court authorized distribution of funds to Endowment for the operations of scholarship
  4. Amount Received approximately \$180,000 in 2011.

# Specific Funds

## Community Fund

The Community fund is the Woodland Rotary Endowment's Operating Fund

This fund is unrestricted and is available to fund local, regional and international projects as long as the projects are conducted by 501(c)(3) Charitable Organizations

Major source of funds = Annual Auction.

The auction is operated by the membership on behalf of and in the name of the Woodland Rotary Endowment.

This allows for sponsors, contributors, etc. to make tax deductible charitable donations.

Funds in the past have been utilized to pay current scholarship disbursements as the scholarship investment fund was building to a sustainable level.

Balance of the auction revenues along with general donations to the endowment are utilized for community and international projects.

A partial list of past projects and donations are presented on the following page.



## Partial List of Major Donations

6/30/15	Yuba Community College District Foundation (Marquee)			30,000
	Rotary International Grant Project GG1524310			3,000
	Yolo County Fiar Heritage Foundation (Fence)			5,000
	Kenya Smiles Project			1,000
	Project Strech			1,000
	Nicaragua Cervical Caner Grant Project			1,833
6/30/14	Woodland Music Booster			15,000
	Woodland Health Care			15,000
	St. John's Retirement Village			1,500
	Luna Vista - Banner Pole Project			2,000
6/30/13	Woodland Music Booster			15,000
6/30/12	RI - Tanzania Water Project			1,500
6/30/11	RI - Tanzania Water Project			1,500
	Red Cross			2,500
6/30/10	County of Yolo Fund 124 BU 135-1 (Gibson House)			5,600
	St. John's Retirement Village			5,000
	Woodland Opera House			20,782
6/30/09	Luna Vista International Project			2,500
	County of Yolo Fund 124 BU 135-1 (Gibson House)			15,000
6/30/08	RI - Water Project w/ Matching Grant			2,800
	Shelter Box USA			1,000
6/30/07	Woodland Healthcare			17,240
6/30/06	Pioneer High School			32,478
6/30/05	Rotary Foundation/Solidarity in South Asia (Tsunami)			2,425
	Pioneer High School			4,138
6/30/04	ROTARY FOUNDATION MATCHING GRANT#23428			750
	Pioneer High School			28,549
				234,094

WOODLAND ROTARY ENDOWMENT			
BALANCE SHEET			
As of June 30, 2015			
<b>ASSETS</b>			
	Current Assets		
	Checking/Savings		
	1030	Cash in Bank	22,671.84
	1081	Cervical Cancer Grant Project	11,000.00
	Total Checking/Savings		<u>33,671.84</u>
	Total Current Assets		
	33,671.84		
	Other Assets		
	1055	Receivable - Rotary Club Wldd	-1,200.00
	1110	Investment/EDJ-B	49,147.12
	1130	Investment/EDJ-8991439913	481,652.45
	Total Other Assets		<u>529,599.57</u>
	<b>TOTAL ASSETS</b>		
	<u>563,271.41</u>		
<b>LIABILITIES &amp; EQUITY</b>			
	Equity		
	2610	Community Fund	34,098.17
	2700	Temporarily Restricted Funds	13,075.14
	2900	Perminately Restricted	528,518.81
	Net Income		-12,420.71
	Total Equity		<u>563,271.41</u>
	<b>TOTAL LIABILITIES &amp; EQUITY</b>		
	<u>563,271.41</u>		

WOODLAND ROTARY ENDOWMENT		
PROFIT & LOSS		
For the year Ended June 3, 2015		
		Jul '14 - Jun 15
<b>Ordinary Income/Expense</b>		
<b>Income</b>		
	3810 · Luna Vista Donation	4,500.00
	3000 · Income /Donation-Education	100.00
	3010 · Ag Fund - Donations	1,000.00
	3016 · Auction Income	0.00
	3100 · Auctions	48,664.76
	3520 · Interest Income	31.65
	3530 · Ordinary Dividends	25,400.37
	3799 · Unrealized Gain / Loss on Invest	-16,555.76
	3800 · Designated Donations	500.00
	3888 · Miscellaneous Income	1,670.19
<b>Total Income</b>		<b>65,311.21</b>
<b>Expense</b>		
	Bank Fee	17.65
	5020 · Scholarships	6,000.00
	5021 · Scholarships/ Ag Fund	1,000.00
	5150 · Investment Fees	3,090.94
	5170 · Auction	20,455.00
	5180 · Major Project	47,033.33
	5190 · Taxes and Licenses	35.00
	6999 · Uncategorized Expenses	100.00
<b>Total Expense</b>		<b>77,731.92</b>
<b>Net Ordinary Income</b>		<b>-12,420.71</b>
<b>Net Income</b>		<b>-12,420.71</b>

Woodland Rotary Endowment									
Fund Balanced									
6/30/2015									
		Permanently Restricted			Temporarily Restricted			Unrestricted	
		Rotary		Dorris	Project	Luna	Cervical	Community	
		Scholarship		Scholarship	Play - 2	Vista	Cancer	Fund	Total
Balance FMV	6/30/2014	452,883.00	-	45,812.14	12,968.44	106.70	-	63,920.60	575,690.88
Net Income		21,313.61		5,086.76		5,000.00		50,466.60	81,866.97
Disbursement		(9,090.94)		(1,000.00)		(5,000.00)		(62,640.98)	(77,731.92)
Scholarship Transfer		30,100.00		(100.00)				(30,000.00)	-
Transfers									-
Balance at Cost	6/30/2015	424,976.53		37,573.80	12,968.44	106.70	-	21,746.22	497,371.69
Proof	Investment	426,427.29		38,473.80					464,901.09
	Cash	(1,450.76)		(900.00)	12,968.44	106.70		21,747.46	32,471.84
		424,976.53		37,573.80	12,968.44	106.70	-	21,747.46	497,372.93
FMV Adjustment		55,225.16		10,673.32					65,898.48
Balance FMV	6/30/2015	480,201.69	-	48,247.12	12,968.44	106.70	-	21,746.22	563,270.17

- **QUESTIONS**