

- CONSTRUCTION NOTES:**
- REMOVE EX. CONC MOW STRIP (111± LF).
  - COUNTY TO REMOVE AND REPLACE EX. IRRIGATION TO ACCOMMODATE NEW PLAY AREA.
  - (12) 2"x2"x3" FLANGED BLACK METAL GATE POSTS, US DOOR & FENCE MODEL NO. FP236PUS, AND (11) 2.67'x7.75' BLACK STEEL FENCE PANELS, US DOOR & FENCE PANEL MODEL NO. F2GHDS93X32US, OR APPROVED EQUIVALENT. SURFACE MOUNT GATE POSTS ONTO THE SIDEWALK WITH EXPANSION ANCHORS PER MANUFACTURER'S RECOMMENDATIONS. INSTALLATION BY OTHERS.
  - INSTALL 143 LF - 8" BARRIER CURB WITH WEEP HOLES ON NORTH SIDE PER DETAIL 1.
  - 1,225± CF WOOD CHIPS OR OTHER PLAY SURFACING FOR CUSHIONING FALLS AS RECOMMENDED BY THE MANUFACTURER OF THE PLAY EQUIPMENT (MIRACLE PLAY SYSTEMS), INSTALLED BY OTHERS.
  - INSTALL 5' SIDEWALK PER DETAIL 3.
  - INSTALL 14 LF 6"SD TO DRAIN AT S=0.015 (ADS N-12 WITH WATERTIGHT JOINTS OR EQUIVALENT).
  - INSTALL SAFETY PANEL SIGN "AGES 2-12" PROVIDED BY PLAYGROUND MANUFACTURER.
  - PLAYGROUND STRUCTURE (16\_0008\_YOLOCO\_008) PER MANUFACTURER'S RECOMMENDATIONS. REFER TO INSTALLATION GUIDE BY MIRACLE RECREATIONAL EQUIPMENT COMPANY FOR FOOTING DETAILS AND ALL OTHER CONNECTION DETAILS, SEE NOTE 14.
  - GRADE AREA TO DRAIN.
  - DOWEL INTO THE EXISTING CONCRETE SIDEWALK WITH 2-12" #4 REBARS EMBEDDED A MINIMUM OF 3" AND EPOXIED IN PLACE.
  - INSTALL CONCRETE RAMP INTO PLAY AREA.
  - INSTALL 6" FLUSH BARRIER CURB PER DETAIL 2.
  - PLAY STRUCTURE INSTALLED BY OTHERS.
  - ALL GRADES SHOWN ARE RELATIVE TO FINISH FLOOR.

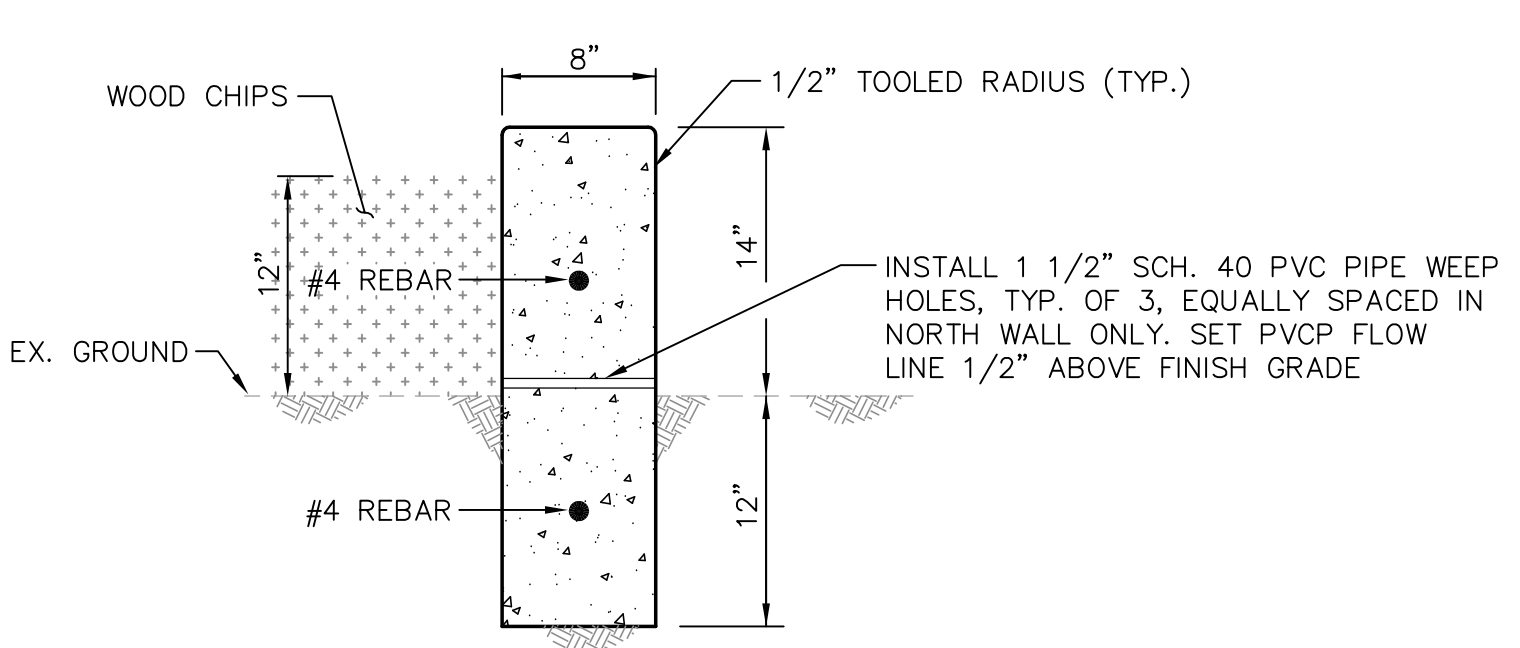
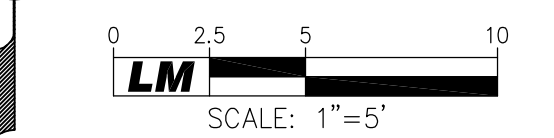
NO.	REVISION	DATE	DESCRIPTION	BY

**LM LAUGENOUR AND MEIKLE**  
 REGISTERED PROFESSIONAL ENGINEER - CIVIL  
 1000 S. TOMMERAASON  
 No. 59277  
 CIVIL ENGINEER  
 STATE OF CALIFORNIA

**TODD C. TOMMERAASON**  
 P.E. 59277

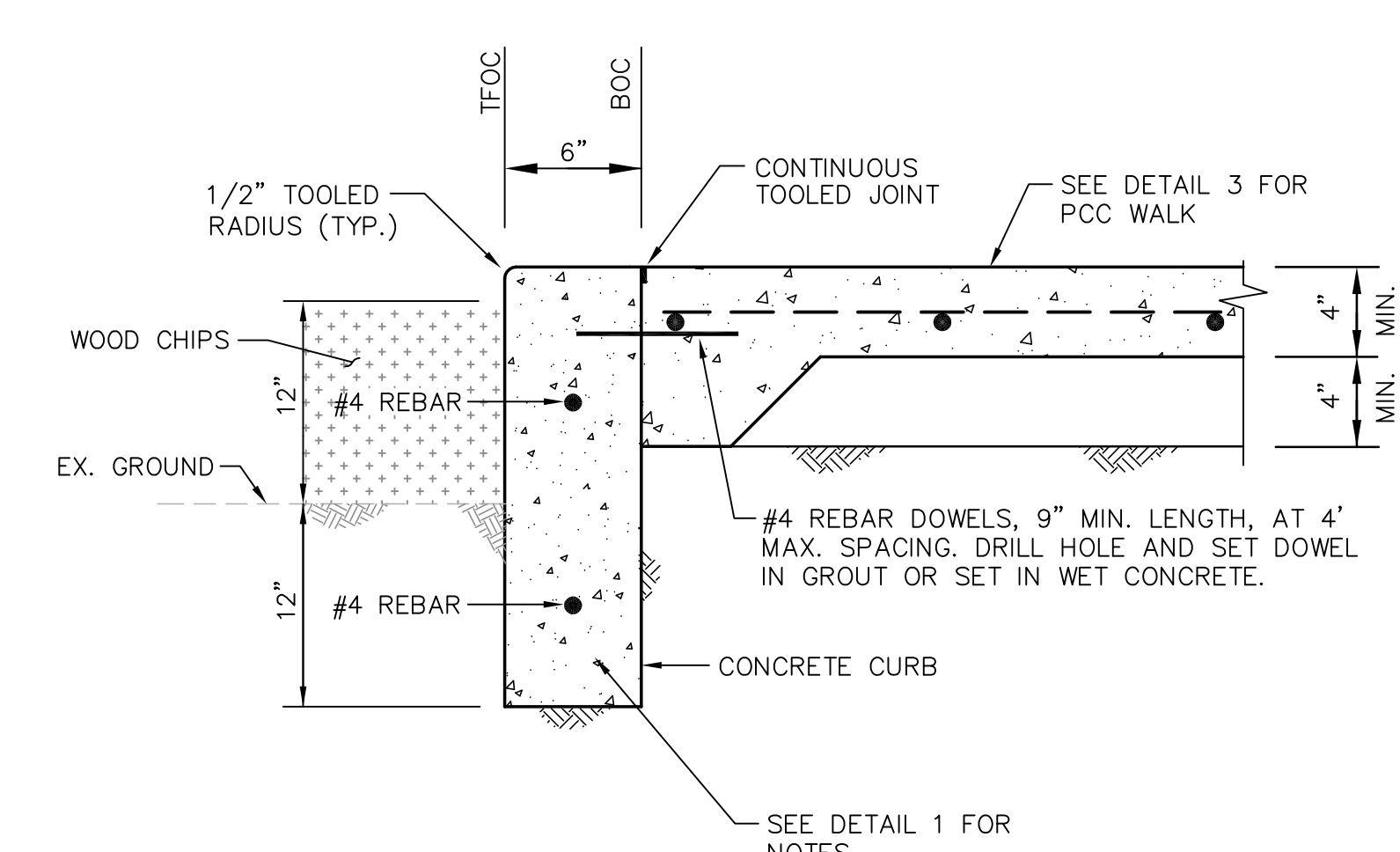
**IMPROVEMENT PLANS FOR YOLO COUNTY HEALTH AND HUMAN SERVICES AGENCY**  
 CALIFORNIA  
**SITE IMPROVEMENT PLAN**  
 CITY OF WOODLAND

JOB NO. 5000  
 FILE  
 DESIGNED BY TCT  
 DRAWN BY MSW  
 CHECKED BY TCT  
 DATE 3-13-18  
 SCALE 1"=5'  
**C-002**  
 SHEET 2 OF 2

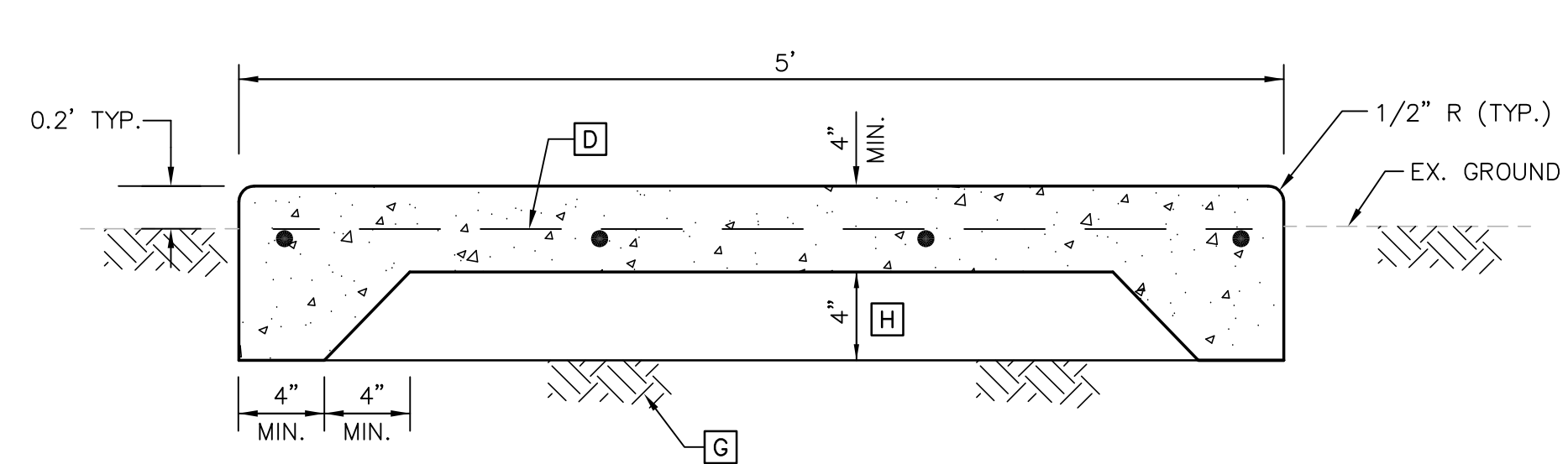


- NOTES**
- ALL WORK AND MATERIALS SHALL CONFORM TO THE CITY OF WOODLAND STANDARD CONSTRUCTION SPECIFICATIONS. CONCRETE SHALL BE CLASS "B-2", 5-SACK MIX WITH 3" MAX. SLUMP (3,000 PSI MINIMUM).
  - INSTALL 1/2" PREMOLDED EXPANSION JOINTS AT 60' MAX. SPACING AND AT ALL ANGLE POINTS.
  - INSTALL 1 1/4" DEEP BY 1/4" WIDE WEAKENED PLANE CONTRACTION JOINTS WITH 1/4" RADIUS TOOLED EDGES AT 10' MAXIMUM SPACING

**1 8" PERIMETER BARRIER CURB**  
NTS



**2 6" BARRIER CURB**  
NTS



- NOTES**
- ALL WORK AND MATERIALS SHALL CONFORM TO THE CITY OF WOODLAND STANDARD CONSTRUCTION SPECIFICATIONS. CONCRETE SHALL BE CLASS "B-2", 5-SACK MIX WITH 3" MAX. SLUMP (3,000 PSI MINIMUM).
  - INSTALL 1/2" PREMOLDED EXPANSION JOINTS PER CITY OF WOODLAND STANDARDS.
  - INSTALL 1 1/4" DEEP BY 1/4" WIDE WEAKENED PLANE CONTRACTION JOINTS WITH 1/4" RADIUS TOOLED EDGES. COORDINATE JOINT (EXPANSION AND CONTRACTION) AND SCORE LINE PLACEMENT WITH ENGINEER.
  - PCC WALK REINFORCED WITH #3 BARS EACH WAY, AT 24" MAX. SPACING OR WITH 6x6-W1.4xW1.4 WWF SET ON PRECAST CONC. BLOCKS (DOBIES) CENTERED IN SLAB.
  - APPLY MEDIUM BROOM FINISH TRANSVERSE TO DIRECTION OF TRAVEL.
  - ALL EXPOSED EDGES SHALL HAVE 1/2" RADIUS.
  - THE TOP 12" OF EARTH SUBGRADE SHALL BE NON-EXPANSIVE SOIL COMPACTED TO 90% MRC. COMPACTED SUBGRADE TO EXTEND 2' (MIN.) BEYOND EDGE OF WALK.
  - 4" MIN. THICKNESS OF 3/4" CL. 2 AB AT 95% MRC.

**3 TYPICAL PCC WALK**  
NTS